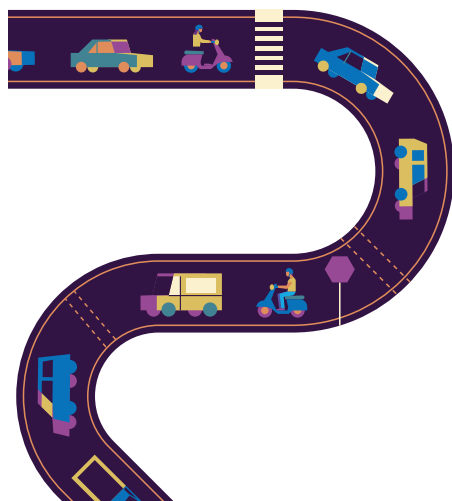


Road Rules: Ride with respect

Respect is showing others they are important by what you say and do.



MEMORY VERSE

“Do to others as you
want them to do to you.”
Luke 6:31, NIV

Bible Story

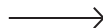
Calling of the Disciples

Luke 5:1-11, 27-32

Include people who are left out.



Weekly Cues



Elementary

ENGAGE IN EVERYDAY MOMENTS TOGETHER



Morning Time

As your kid starts their day, let them know how glad you are that they are part of your family, and what an important place they have within it.



Meal Time

At a meal, have everyone at the table answer this question: "Tell us about a time when you included someone who was being left out OR a time when you were being left out and someone included you."



Drive Time

While on the go, ask your kid: "When has someone been kind to you lately? And when were you kind to someone lately?"



Bed Time

Pray for each other: "Jesus, open our eyes to help us see those around us who are being left out. Help us to show Your love to them by being kind and including them. And when we feel left out, help us remember that You NEVER leave us out."



PARENT CUE

Download the free Parent Cue app
AVAILABLE FOR APPLE AND ANDROID DEVICES

©2022 Parent Cue. All Rights Reserved.